



C2 PLAYER

● ● ●

USER MANUAL

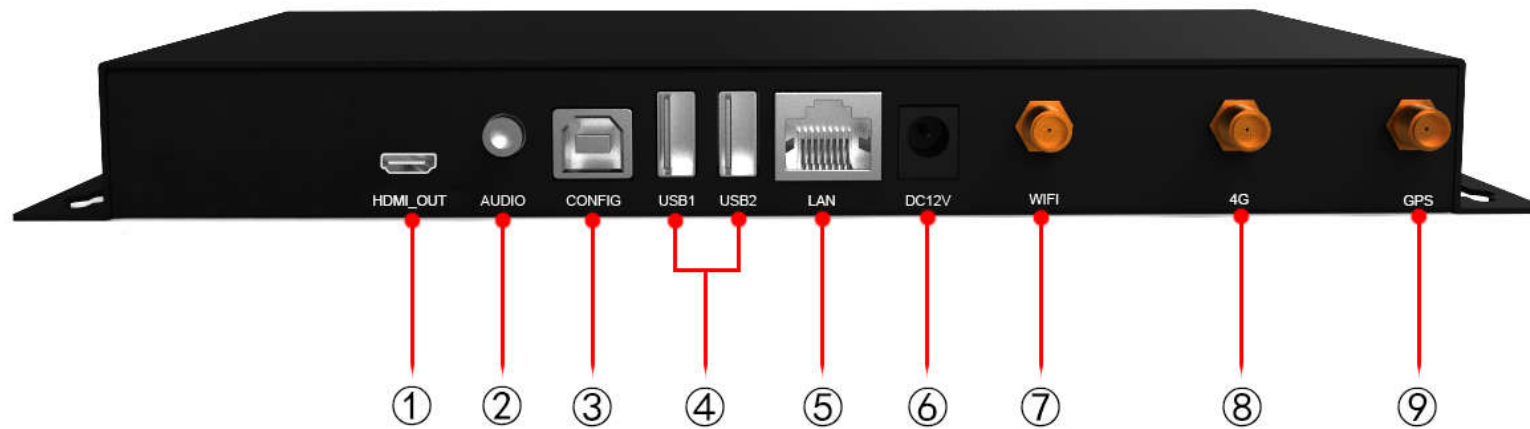
INSTRUCTIONS



CONTENT

Chapter 1 C2 Interface and Hardware Connection.....	1
1.1 C2 Interface	2
1.2 Hardware Connection	3
Chapter 2 LEDVISION Installation.....	4
Chapter 3 C2 Settings	6
3.1 Connect with USB Cable.....	6
3.2 Basic Settings.....	8
3.3 Advanced Settings.....	13
3.3.1 Playing Parameters.....	13
3.3.2 Network.....	14
Chapter 4 Program Editing and Publishing.....	18
4.1 Program Editing.....	18
4.2 Program Publishing	19
4.2.1 Publish Program through Direct USB Cable	19
4.2.2 Publish Program through LAN.....	21
4.2.3 Publish Program through USB Disk	23
Chapter 5 Manage C2 from LAN	26
5.1 Auto Connect C2	26
5.2 Manual Connect C2.....	27

Chapter 1 C2 Interface and Hardware Connection



1.1 C2 Interface

No.	Name	Functions
1	HDMI Output	Signal output, connecting with LCD
2	Audio Output	HIFI stereo output
3	CONFIG Port	Screen parameters setting; Program publishing
4	USB Port	Program updating through U disc
5	LAN Port	Access network
6	Power Port	DC12V
7	WIFI interface	Connect with WIFI antenna
8	4G interface	Connect with 4G antenna (optional)
9	GPS interface	Connect with GPS antenna (optional)

1.2 Hardware Connection

C2 Configuration



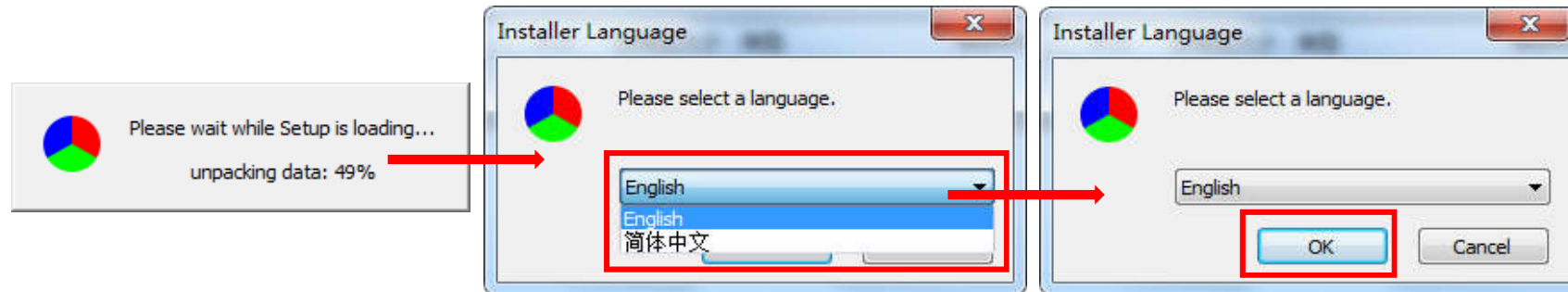
Control & Play without computer



Chapter 2 LEDVISION Installation

First download the installation package of LEDVISION software from Colorlight's official website www.colorlightinside.com, and complete the installation according to the diagrams below.

1. Run the software package, and select [**English**] for installer language. Click [**OK**] to move on.



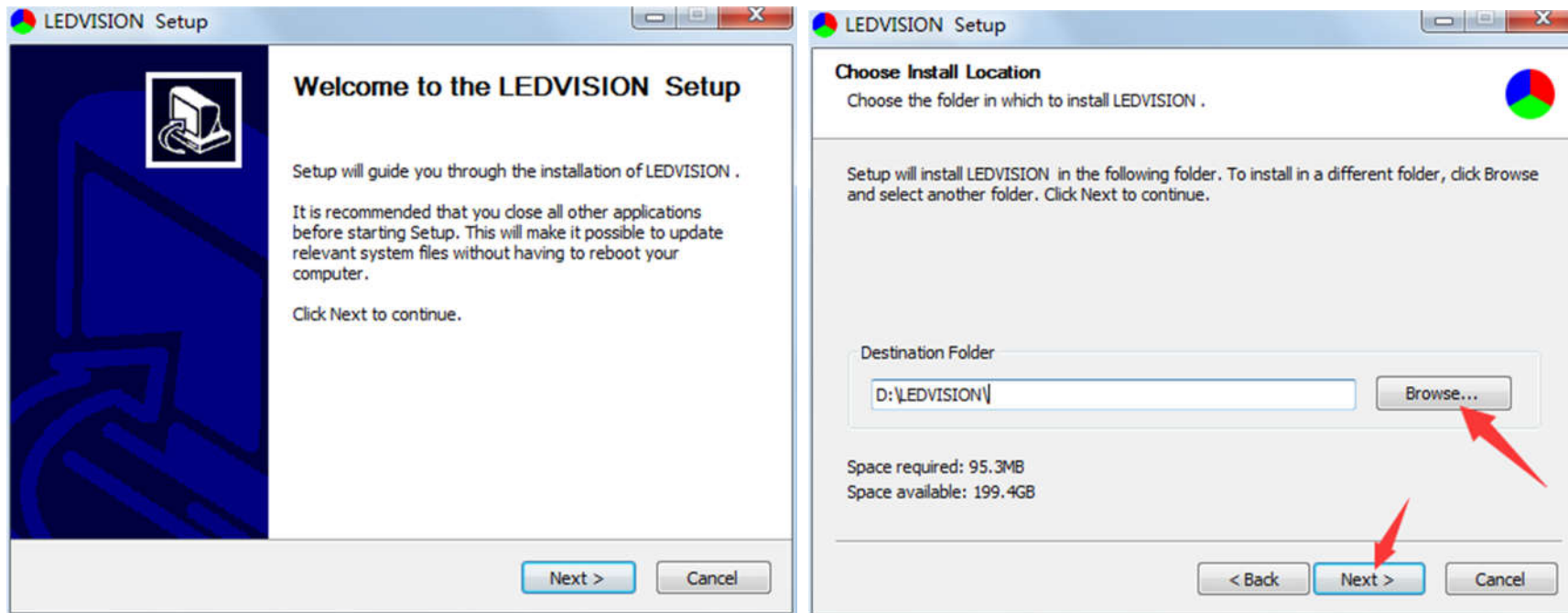
Note: Run LEDVISION version 5.0 or higher while using C2.

2. After selecting a language, an installation wizard like below will appear. Click [**Next**].

Then choose installation location, click [**Browse**] to change default target location, then click [**Next**] after completing;

Choose components according to your own computer status, click [**Install**] to complete;

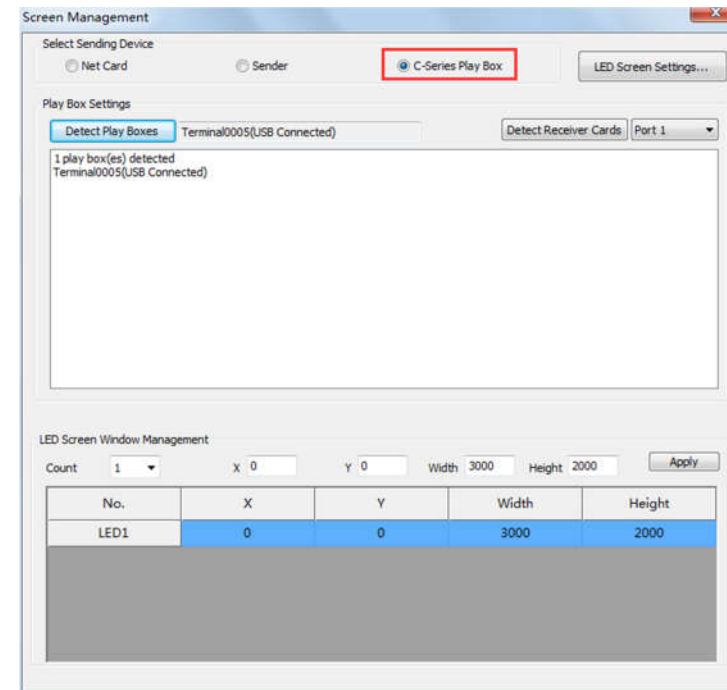
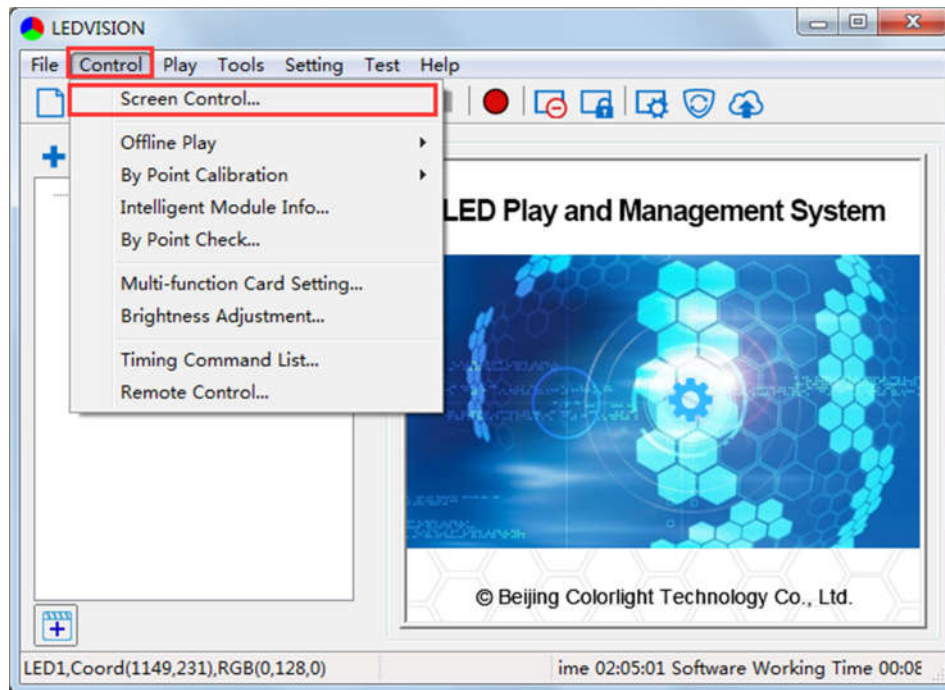
After the installation is complete you are ready to use LEDVISION.



Chapter 3 C2 Settings

3.1 Connect with USB Cable

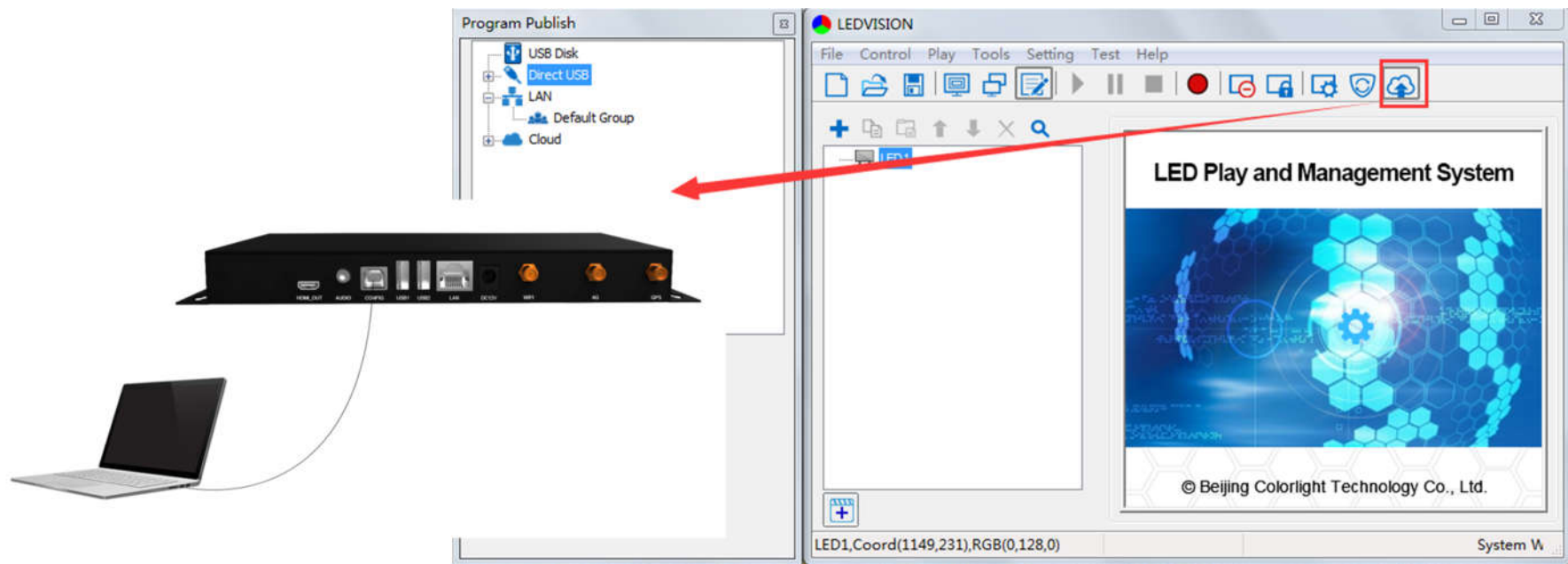
1. Before connecting C2 to the computer, first click the control menu [**Control**] – [**Screen Control**], then select [**C-Series Play Box**] in **Select Sending Device**.



Note: If you do not complete this step, LEDVISION may not function properly because of a conflict between Net Card mode and C2 CONFIG interface.

2. Use standard USB A/B cable to connect C2 to computer when C2 is powered on.

Click [**Publish Program to C Series Playboxes**] (as shown in the red box) to enter program publish interface.



3.2 Basic Settings

- Ensure LCD display is powered.
- When setting C2 parameters, connect C2 to PC through a standard USB A/B cable, and connect C2 to LCD screen through HDMI cable.

Time Settings: Click [**Modify**] to set up date and time, or time zone, etc.

Player Time: Display current time.

Uptime: Calculated running time once C2 powered on.

Total/Available: View memory utilization.

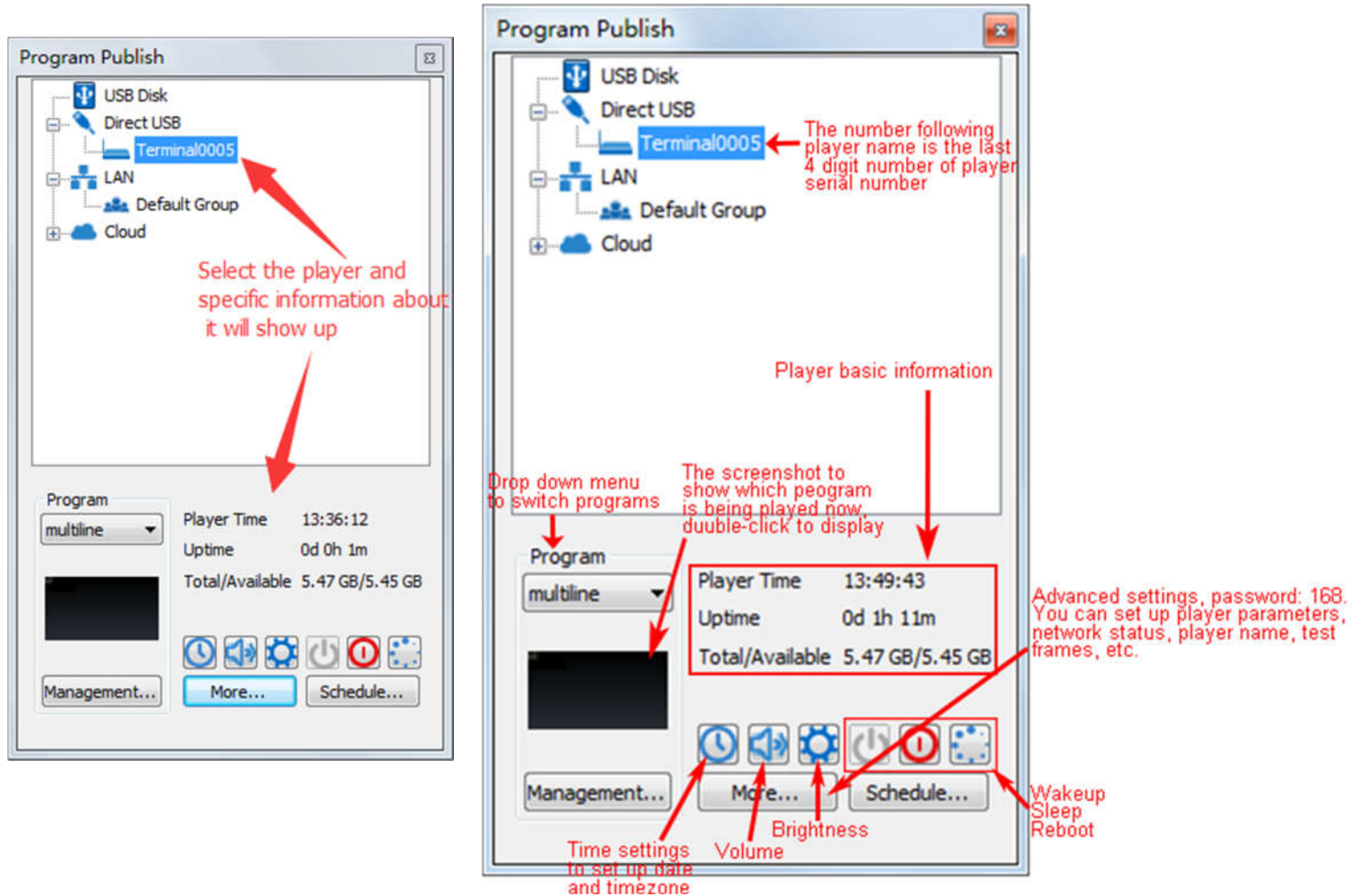
Wakeup, Sleep, Reboot: To control C2 like wakeup, sleep and reboot once clicked.

Program: Use the drop down menu to switch programs.

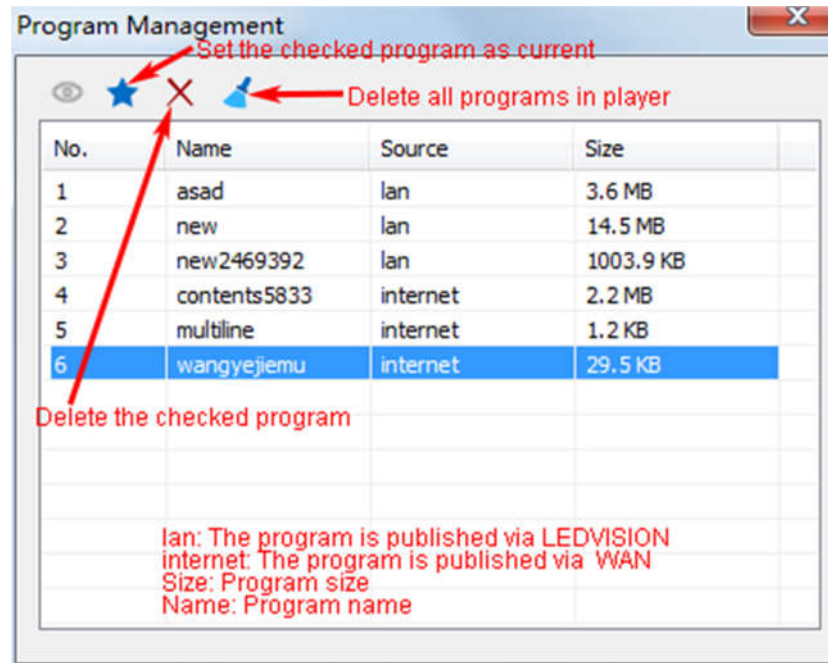
Management: Check, delete and choose program, and more.

Schedule: Schedule programs, sleep, wakeup, reboot, brightness adjustment, etc.

1. After connecting C2 to the computer, a C2 player will show up in **Direct USB**, you can check the specific information and some basic settings about it through selecting the player.

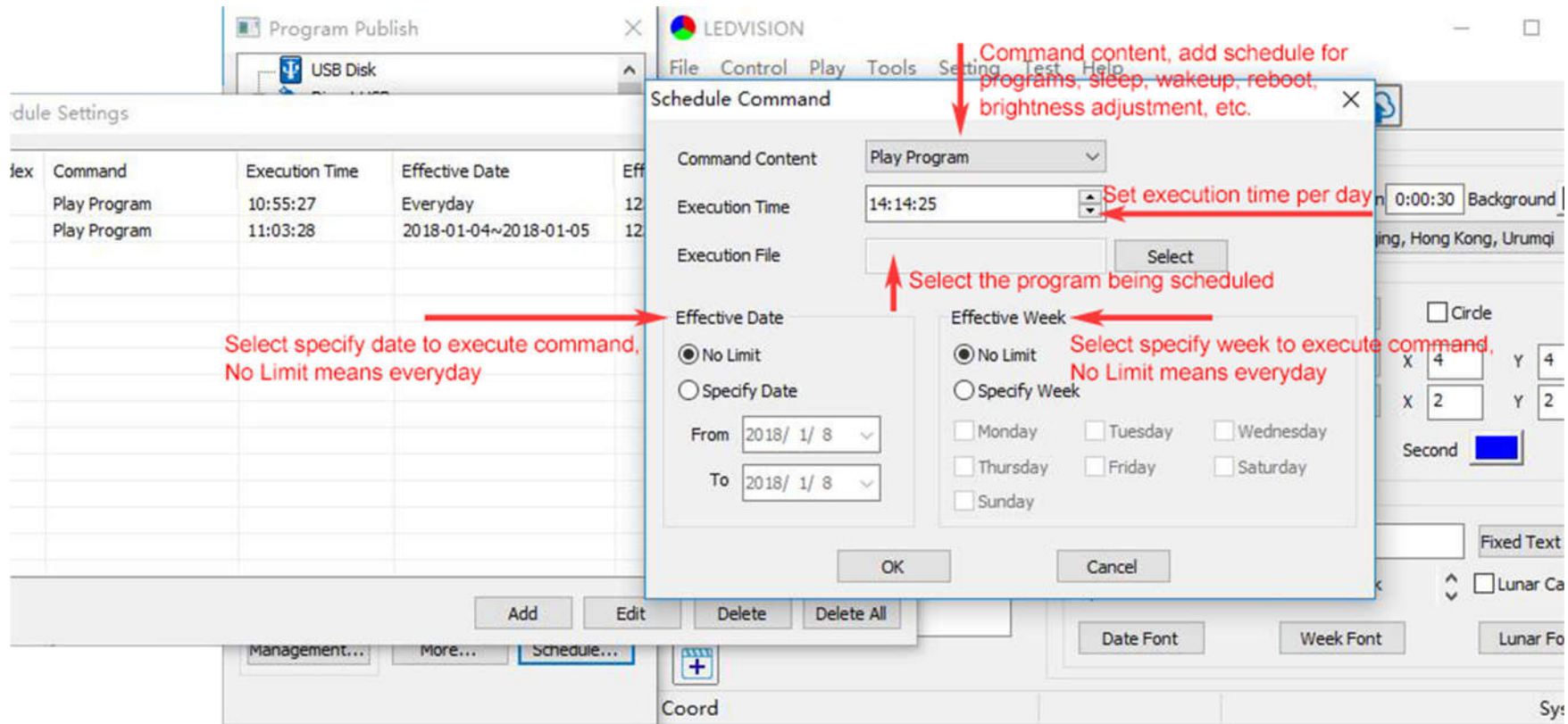


2. In **Program Management**, you can conduct a comprehensive management on programs in C2 player.



3. Schedule

In **Schedule Settings**, click [**Add**] to add schedule for programs, sleep, wakeup, reboot, brightness adjustment, media volume, etc. as shown below:



Command content, add schedule for programs, sleep, wakeup, reboot, brightness adjustment, etc.

Set execution time per day

Select the program being scheduled

Select specify date to execute command, No Limit means everyday

Select specify week to execute command, No Limit means everyday

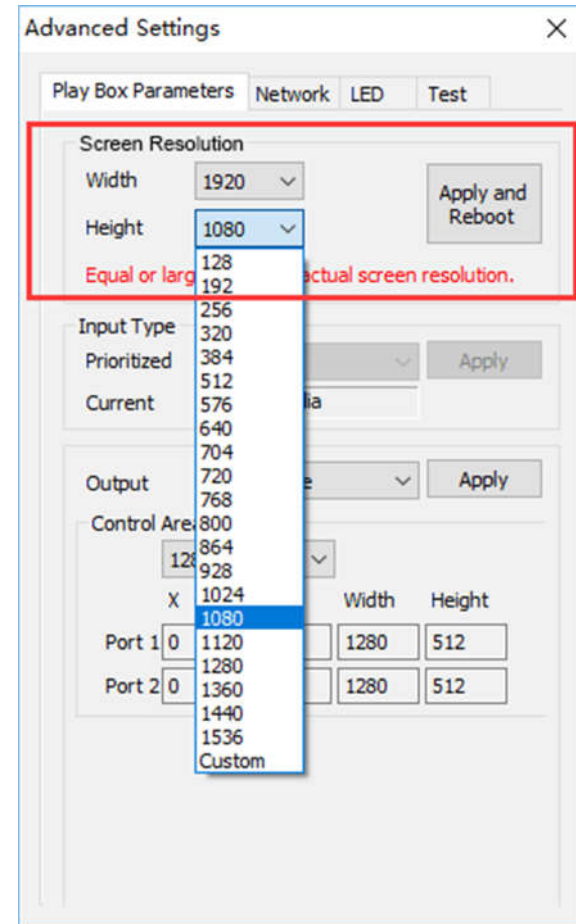
Index	Command	Execution Time	Effective Date	Eff
	Play Program	10:55:27	Everyday	12
	Play Program	11:03:28	2018-01-04~2018-01-05	12

3.3 Advanced Settings

3.3.1 Playing Parameters

Resolution

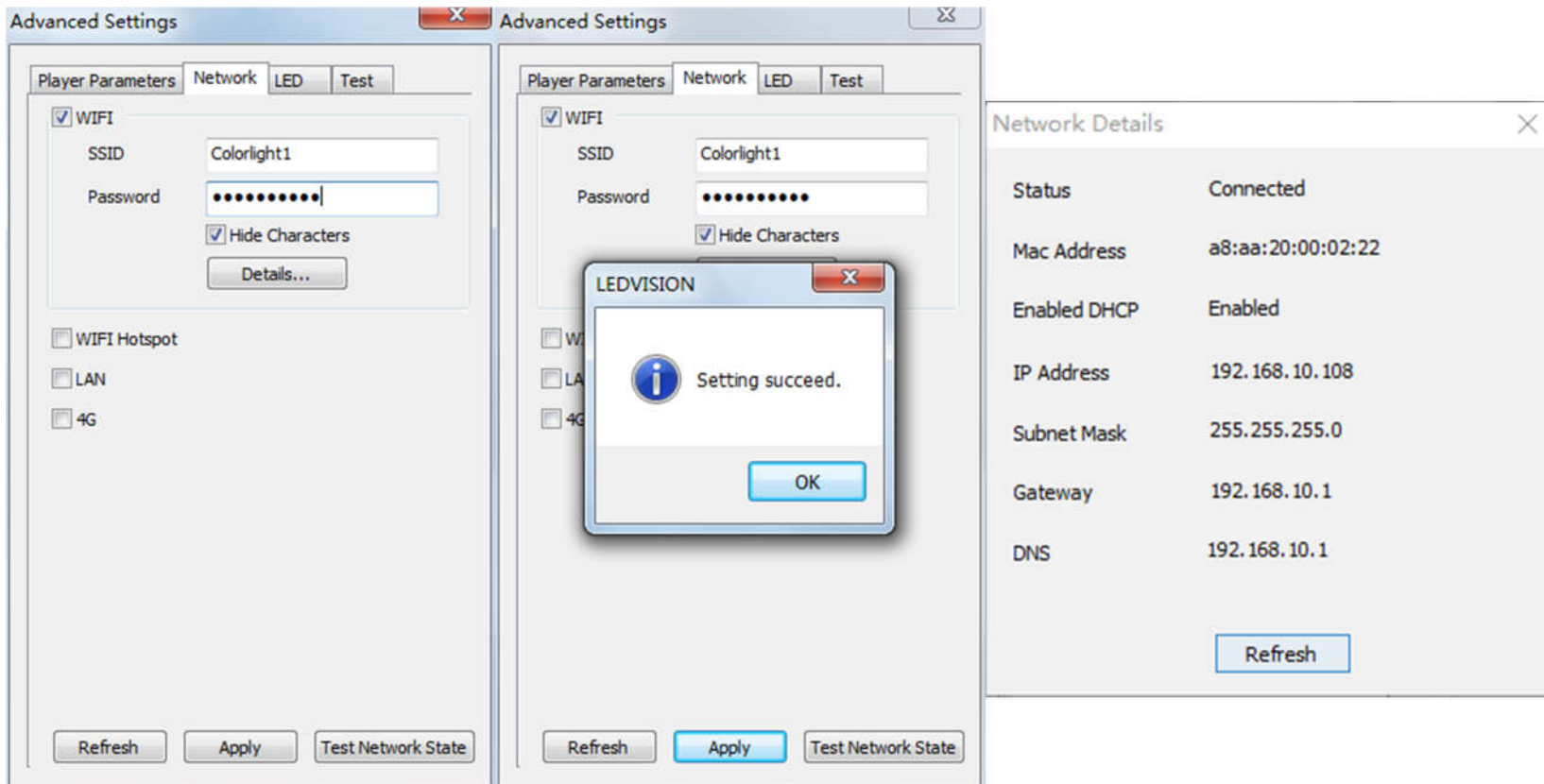
[Width] / [Height]: LCD pixel Resolution in width and height, the device will reboot after applying.



3.3.2 Network

1. WiFi

Check [WiFi] in network tab, and input your WiFi login information in terms of [SSID] and [Password], then click [Apply] to complete setting, click [Refresh]/[Details] to check connection status.



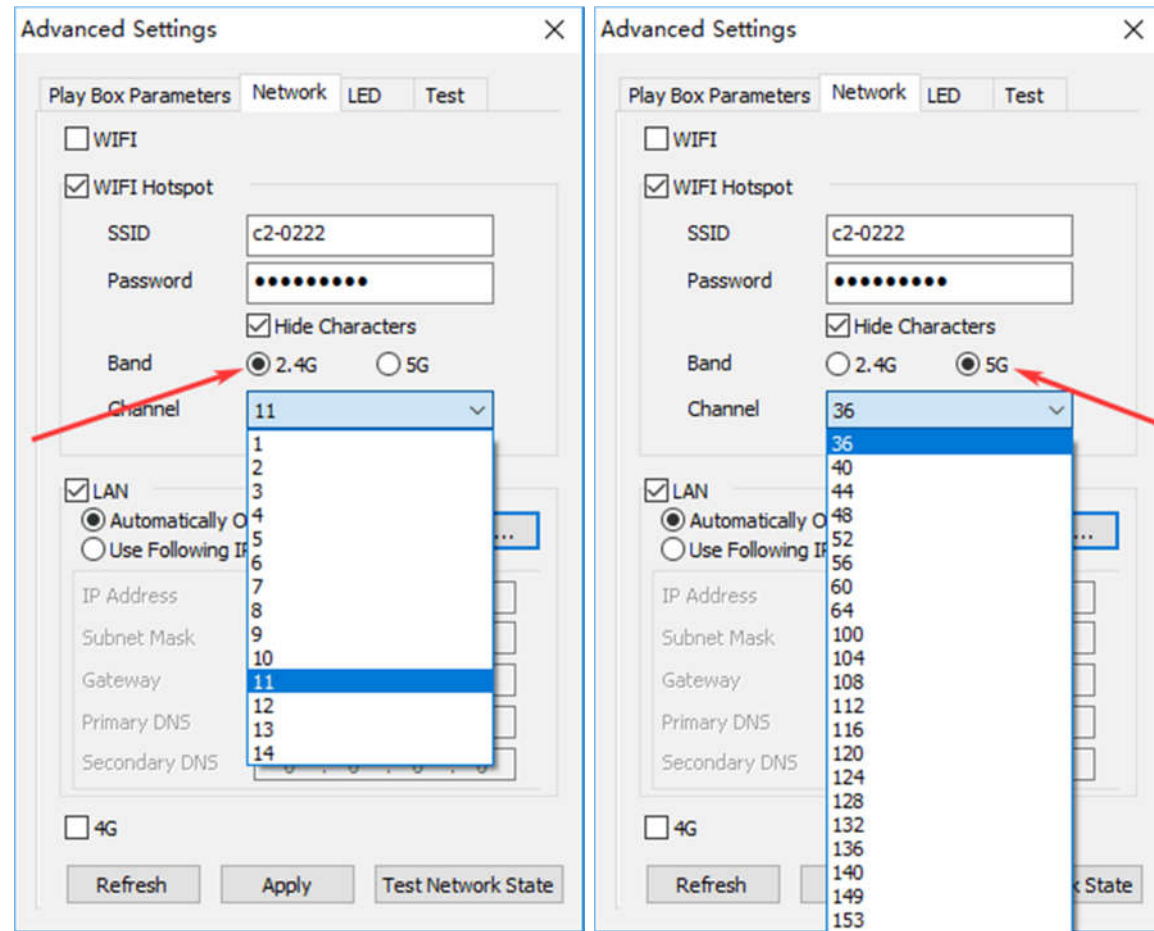
2. WiFi Hotspot

Make the C2 acts as a WiFi Hotspot.

Note: You must change the default password of the C2 WiFi Hotspot.

[Band]: 2.4G or 5G (5G mode will be more reliable if your controlling devices such as smart phone and computer support 5G WiFi, and you are in a WiFi crowded area).

[Channel]: Choose channel 1, 6, 11 for 2.4G. Consult local authorities when choosing channel.



3. LAN (Network Cable)

- [**Automatically Obtain IP Address**] (Default)

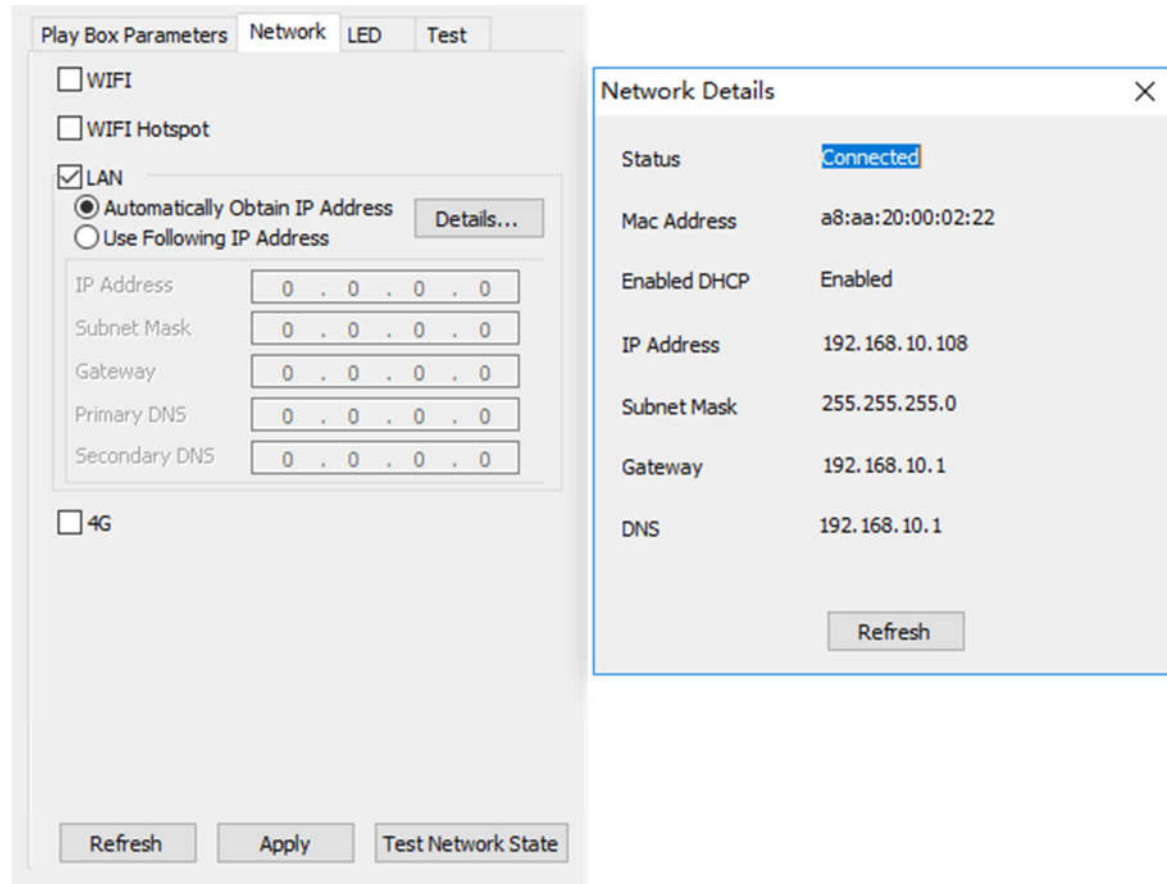
When you connect C2's LAN port into a LAN capable of providing IP address, C2 will automatically obtain an IP address.

- [**Use Following IP Address**]

To use a specific IP address, enter information for [**IP**], [**Subnet Mask**], [**Gateway**], then connect C2 LAN port to the router.

- [**Details**]

View network connection information like **Status**, **Mac Address**, **IP address**, etc.



The screenshot shows the 'Network' configuration page with the following settings:

- WIFI
- WIFI Hotspot
- LAN
 - Automatically Obtain IP Address (with a 'Details...' button)
 - Use Following IP Address
- IP Address: 0 . 0 . 0 . 0
- Subnet Mask: 0 . 0 . 0 . 0
- Gateway: 0 . 0 . 0 . 0
- Primary DNS: 0 . 0 . 0 . 0
- Secondary DNS: 0 . 0 . 0 . 0
- 4G

At the bottom of the main window are buttons for 'Refresh', 'Apply', and 'Test Network State'.

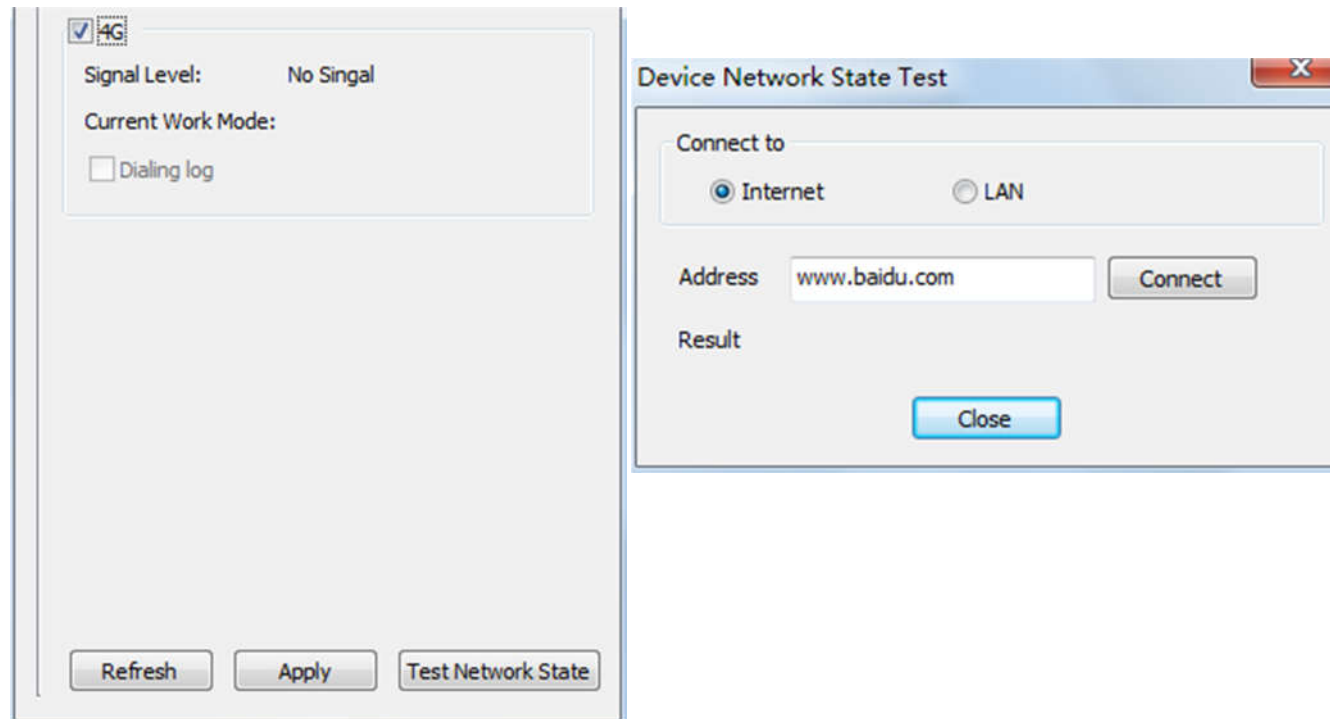
The 'Network Details' popup window shows the following information:

Status	Connected
Mac Address	a8:aa:20:00:02:22
Enabled DHCP	Enabled
IP Address	192.168.10.108
Subnet Mask	255.255.255.0
Gateway	192.168.10.1
DNS	192.168.10.1

A 'Refresh' button is located at the bottom of the 'Network Details' window.

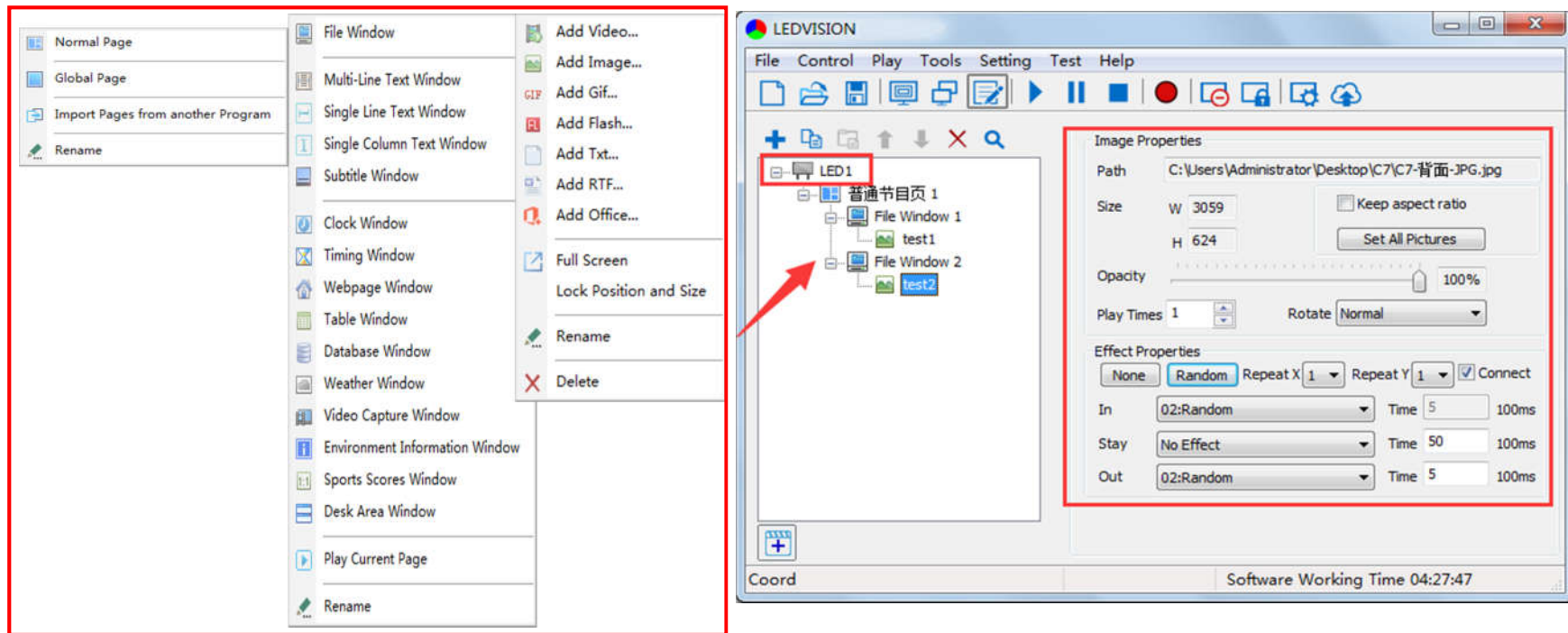
4. 4G

Check [**4G**] in network tab, click [**Apply**] and [**Refresh**] to access 4G network, click [**Test Network State**] to check connection status.



Chapter 4 Program Editing and Publishing

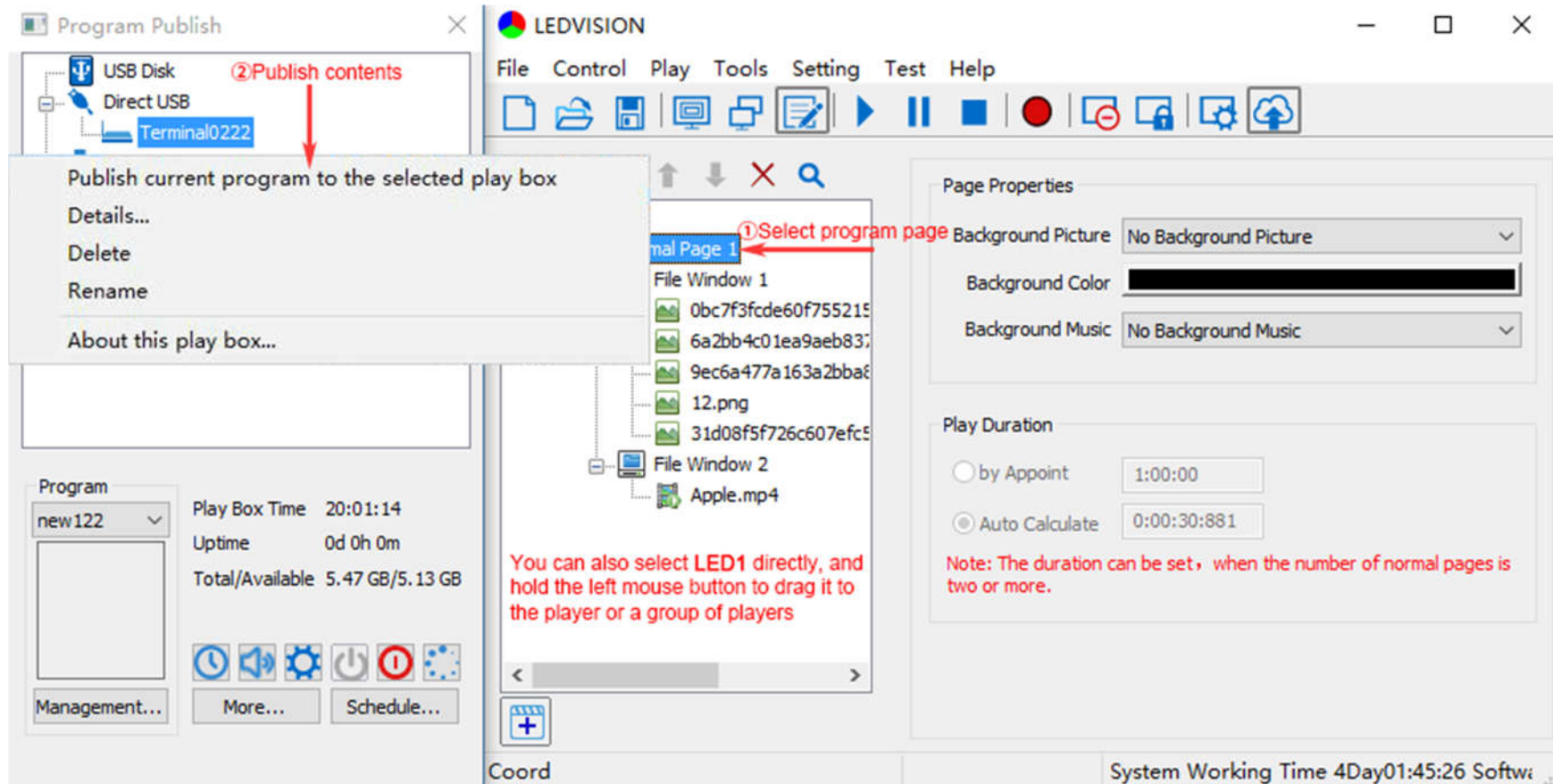
4.1 Program Editing



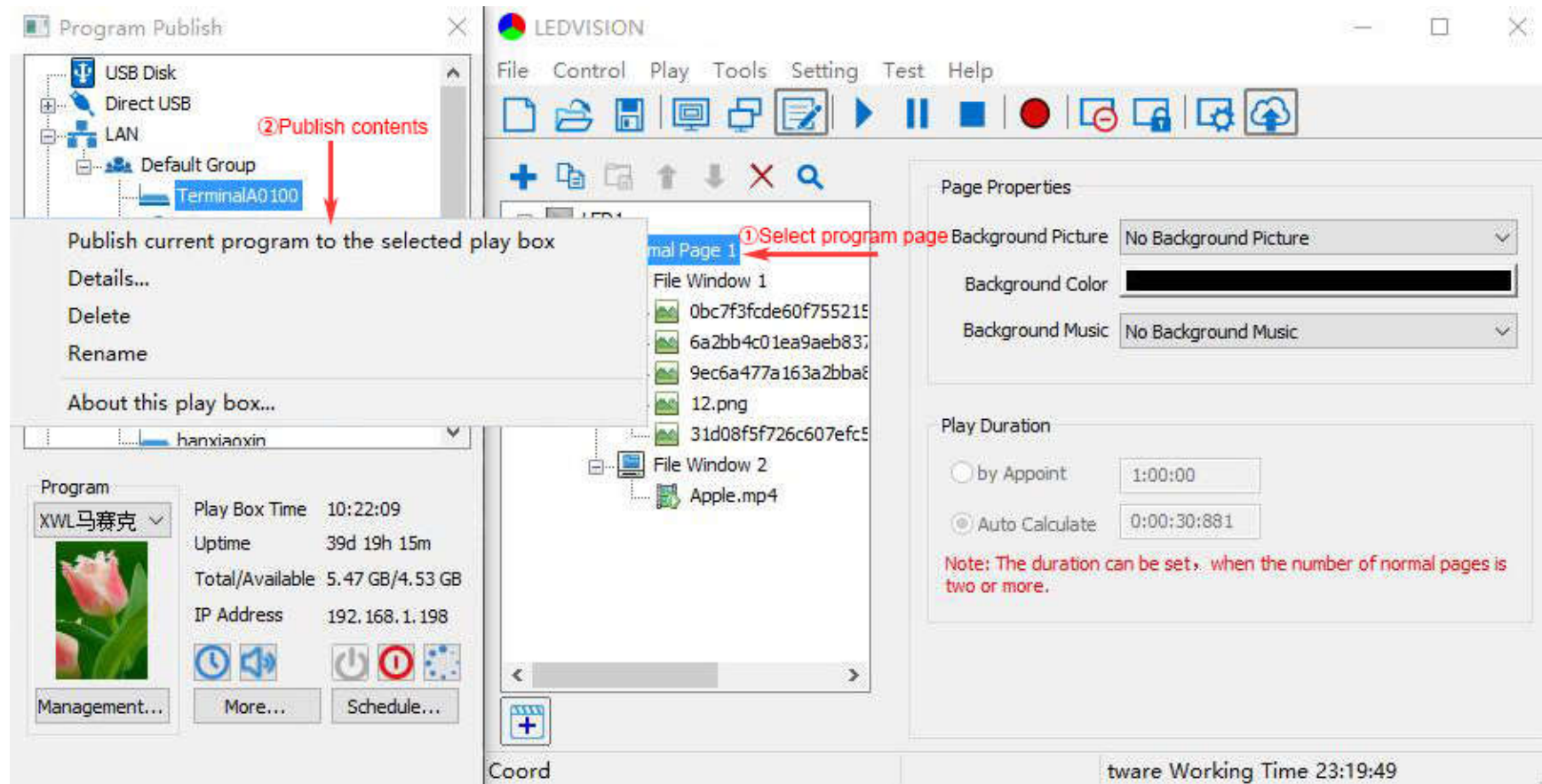
When you open LEDVISION, you will see [LED1] in program editing area. Right-click [LED1] to add [Normal Page], add [File Window] in [Normal Page], then add [Image] and [Video] under the [File Window] to add media for asynchronous play.

4.2 Program Publishing

4.2.1 Publish Program through Direct USB Cable



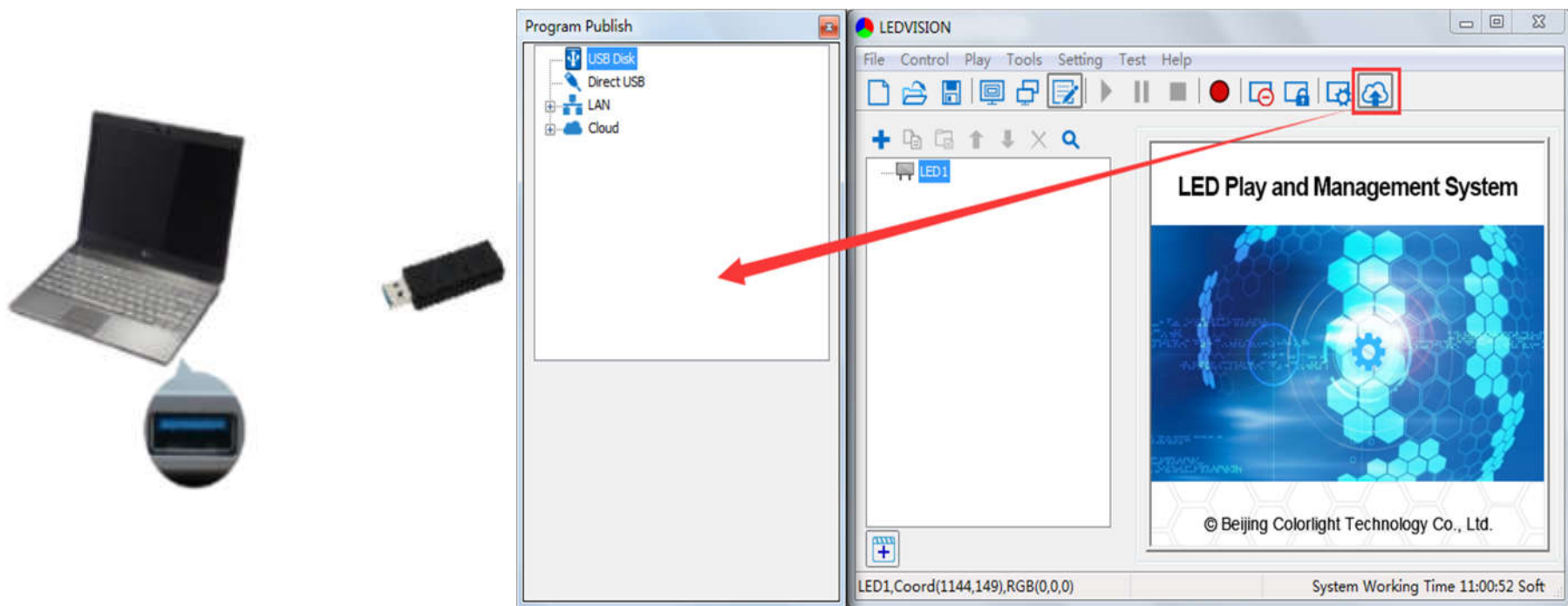
4.2.2 Publish Program through LAN



4.2.3 Publish Program through USB Disk

1. To begin publishing through USB, first insert your USB disk to a PC USB port;

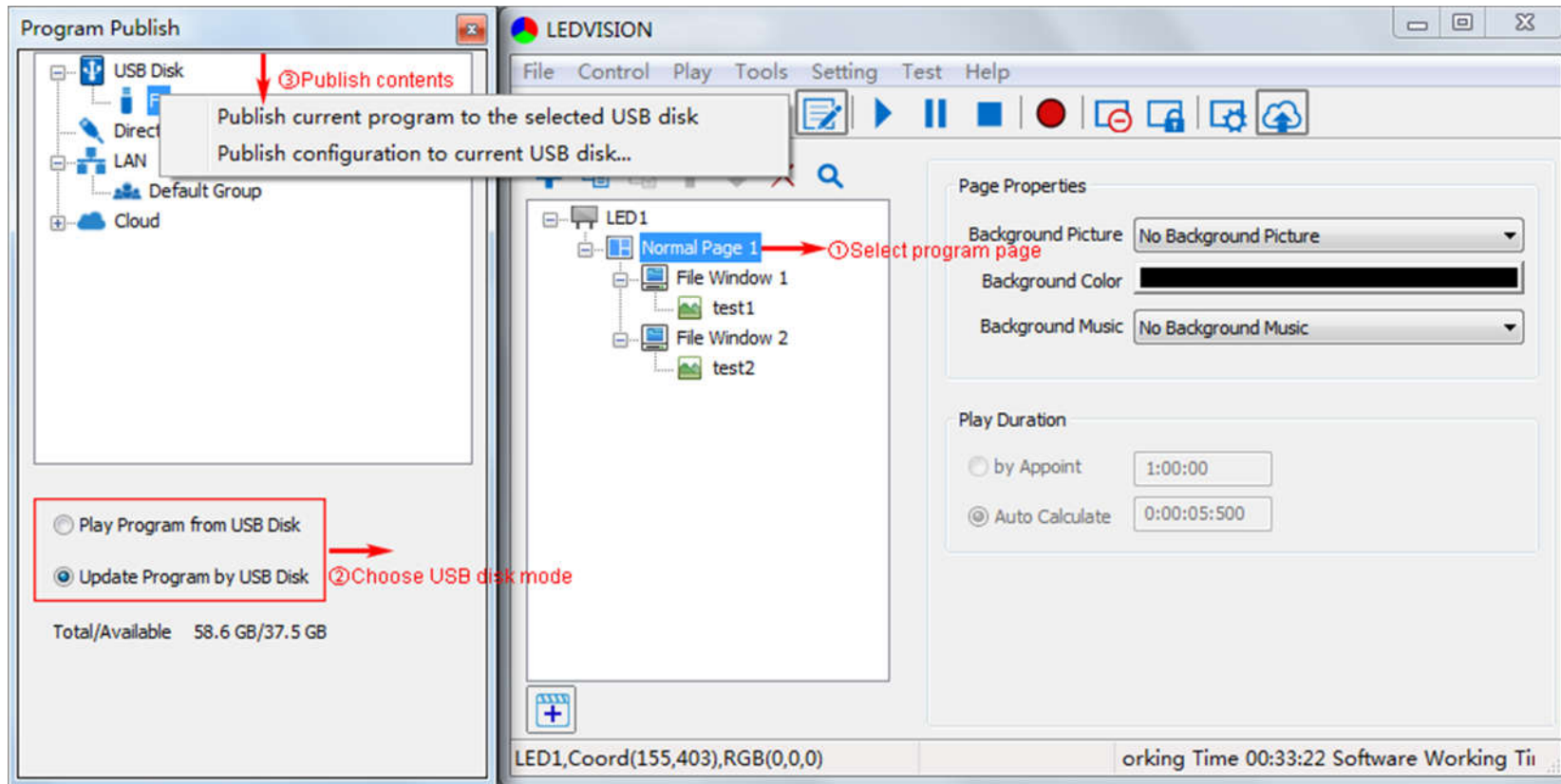
Click [**Publish Program to C-Series Playboxes**] to expand program publishing window.



Note: USB disk should be empty before publishing for best performance.

2. Software will automatically detect USB disk when plugged in, click [**USB Disk**], find the USB Disk.

1) Select the [**Program Page**] in **Program Editing Area**.



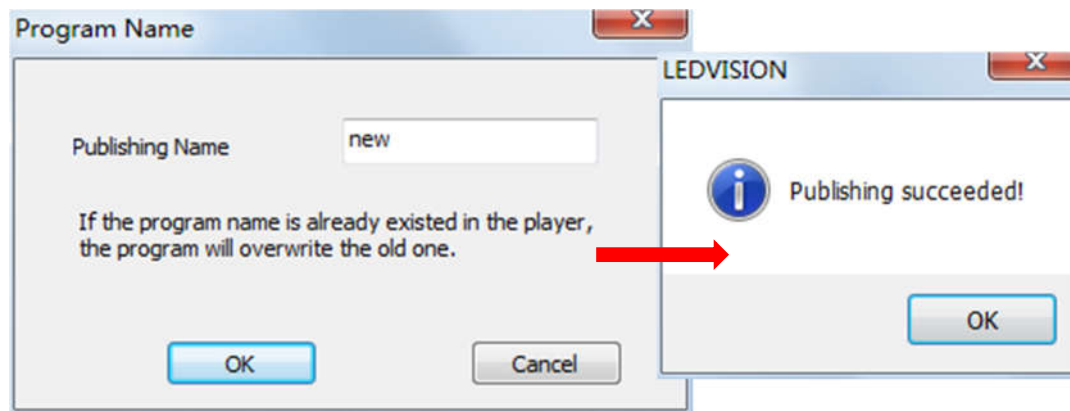
2) Choose **USB Disk Mode**:

- Play program from USB disk (Auto play USB disk content after inserting to C2; and **the content won't be**

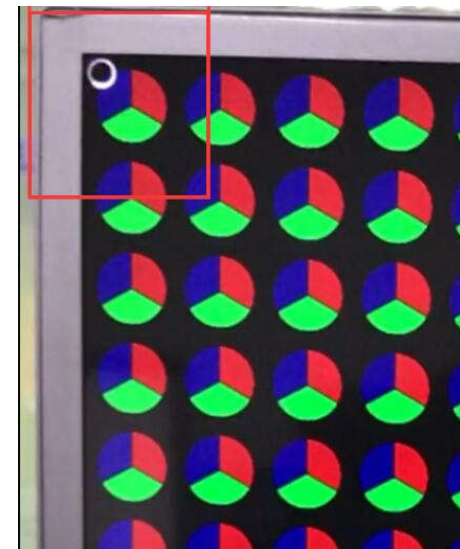
stored in C2)

- Update program from USB disk (Auto play USB disk content after inserting to C2; and **the content will be copied and stored in C2**)

3) Select **the drive letter under USB Disk**, then right-click to choose [**Publish current program to the selected USB disk**], after publishing program successfully, insert the USB disk into C2 USB port.



Plug USB disk to C2 after uploading, to enter updating procedure



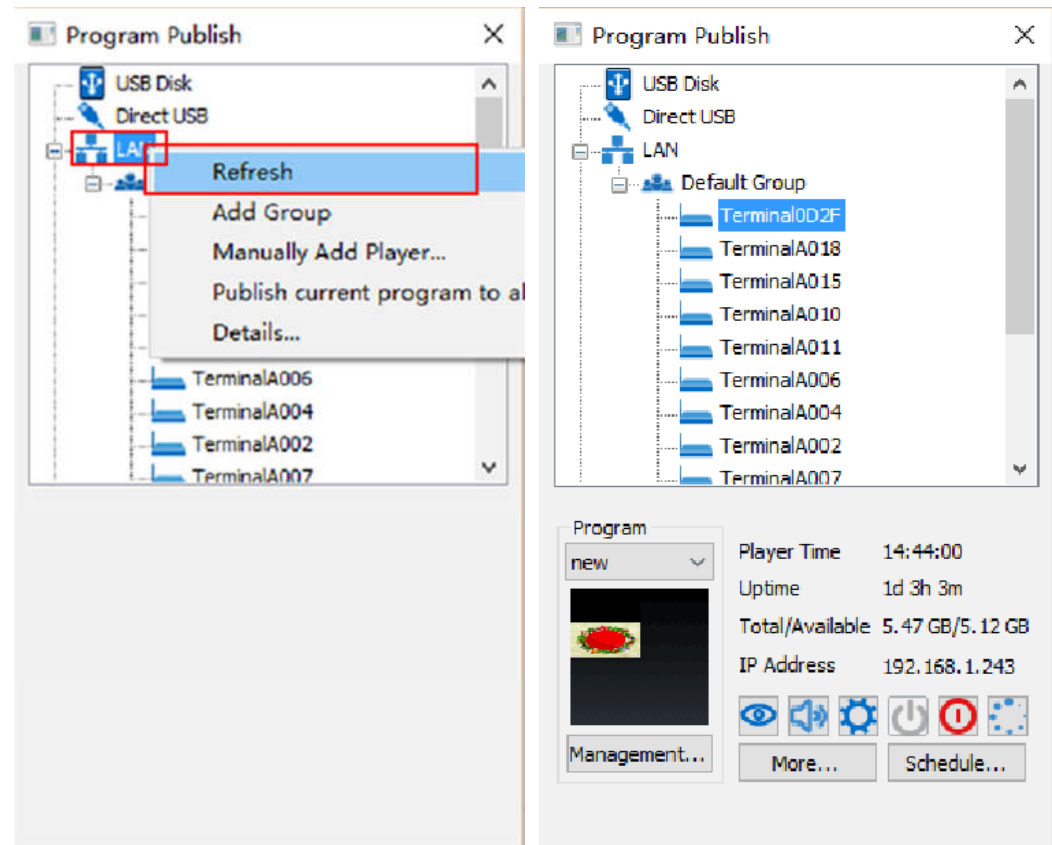
Note: A rotating circle in LED upper left corner will appear during the updating procedure. You may unplug the USB drive after the circle disappears.

Chapter 5 Manage C2 from LAN

5.1 Auto Connect C2

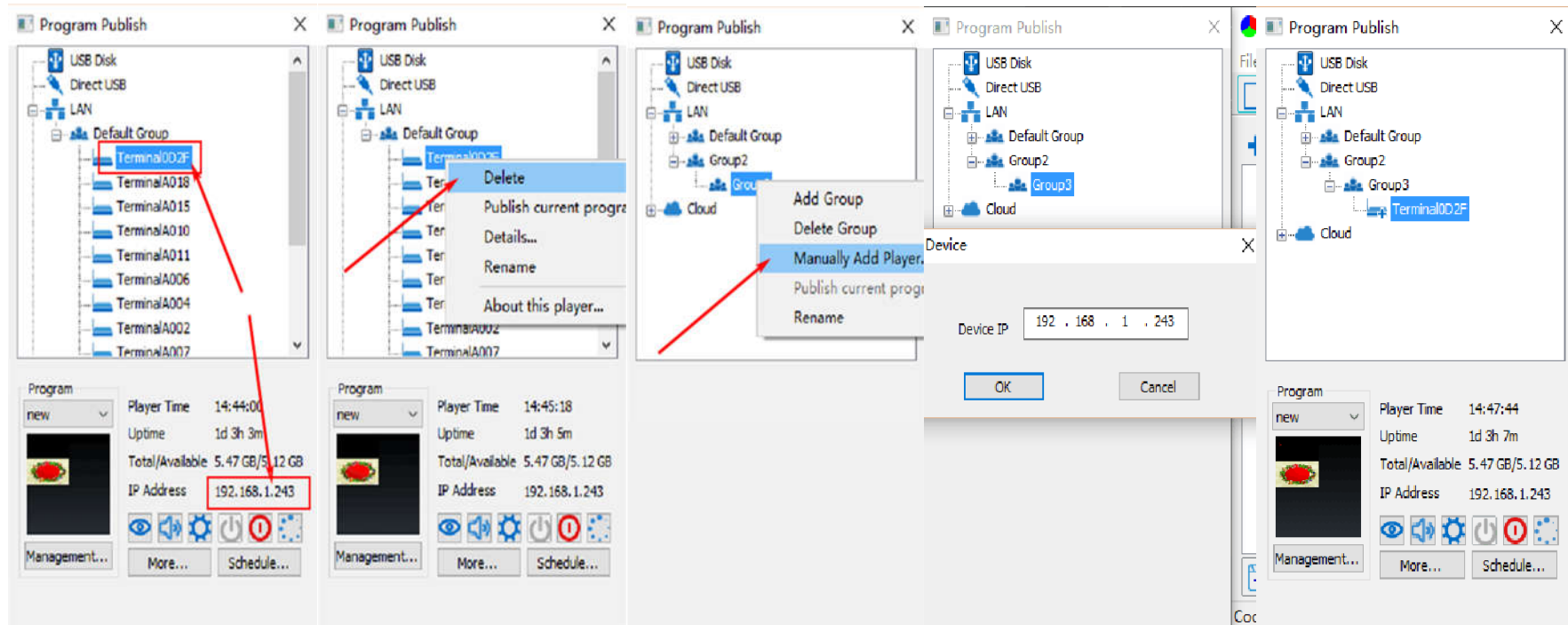
1. **LAN Connection:** Connect C2 to network through **WiFi** or **LAN port**.

2. **Auto Scan:** After controlling end (PC, smart phone, or other device) and C2 are connected into the same LAN, select [**LAN**] then [**Refresh**], LEDVISION will scan automatically **C2** in the LAN and place C2 into **Default Group**.



5.2 Manual Connect C2

1. **Add Group:** Select [LAN], and right- click to choose [**Add Group**].
2. **Add C2:** Select any player group, and right-click to choose [**Manually Add Player**], then input C2's corresponding IP (Can add even if the C2 is not connecting to the network).





Visual Future

Colorlight US, Inc.
www.colorlightinside.com